

# Landscape scheme for the area around Jigenji Park



## Outline of the Jigenji Park Area

The area is centred around Jigenji Park and the ruins of Jigenji temple, a designated cultural asset of Kagoshima City. The flat land on the east side of the JR Ibusuki-Makurazaki Line is covered with low-rise residential areas, while the hills on the west side still has its natural scenery preserved, including that of Jigenji Park.

Jigenji Temple is said to have been founded over 1,300 years ago during the reign of Emperor Suiko by a famous Buddhist priest from Baekje (Korea) named Shonin Nichira, who enshrined a statue of Avalokitesvara in the temple. Later, in 1542, the 15th head of the Shimazu family, Takahisa Shimazu, converted the temple to Buddhism and it became a branch of the Fukusho-ji, which flourished as a Soto Zen temple.

Since then, the temple has been revered by the Shimazu family for generations, and Iehisa, the 18th head of the family, named the temple Jigenji after his second name, Jigen.

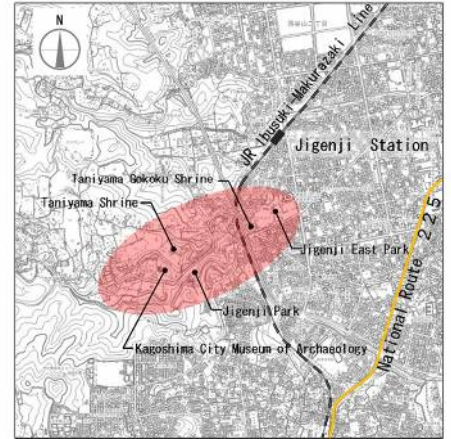
The Kannon-do Temple was demolished in 1869 due to the abolition of Buddhism, after which the Inari Shrine was later built. Today, the Magai monument, Statues of the Nio Guardians and other stone monuments remain, and in 1974 the “Jigenji Ruins” became a designated monument of Kagoshima City.

The rich natural environment is conserved at Jigenji Park, including that surrounding the “Jigenji Nature Trail” . As you stroll through the laurel forest, you can enjoy the seasonal colours of autumn leaves or cherry blossoms while listening to flowing river sounds. There are also many citizens who go to the Shusui Well within the park to take spring water that flows through the forest.

From the observatory near Taniyama Shrine - which is dedicated to the son of Emperor Godaigo, Prince Kane Naga - there is a magnificent view of Sakurajima and the city. The rows of zelkova trees and the Italian-style cascade at the Kagoshima City Museum of Archaeology create an enriched landscape as part of Jigenji Park.

The area including this site was the first in Kagoshima City to be designated as a “scenic area” in 1962. This is specified as an area with a natural landscape which is maintained by means of land-use planning, in order to preserve the natural beauty within the urban environment.

※Established in 1973 by the Kagoshima Woodland Office of the Forestry Agency.



Location of Jigenji Park Area



Jigenji Ruins (Designated Monument of Kagoshima City)



Italian-Style Cascade

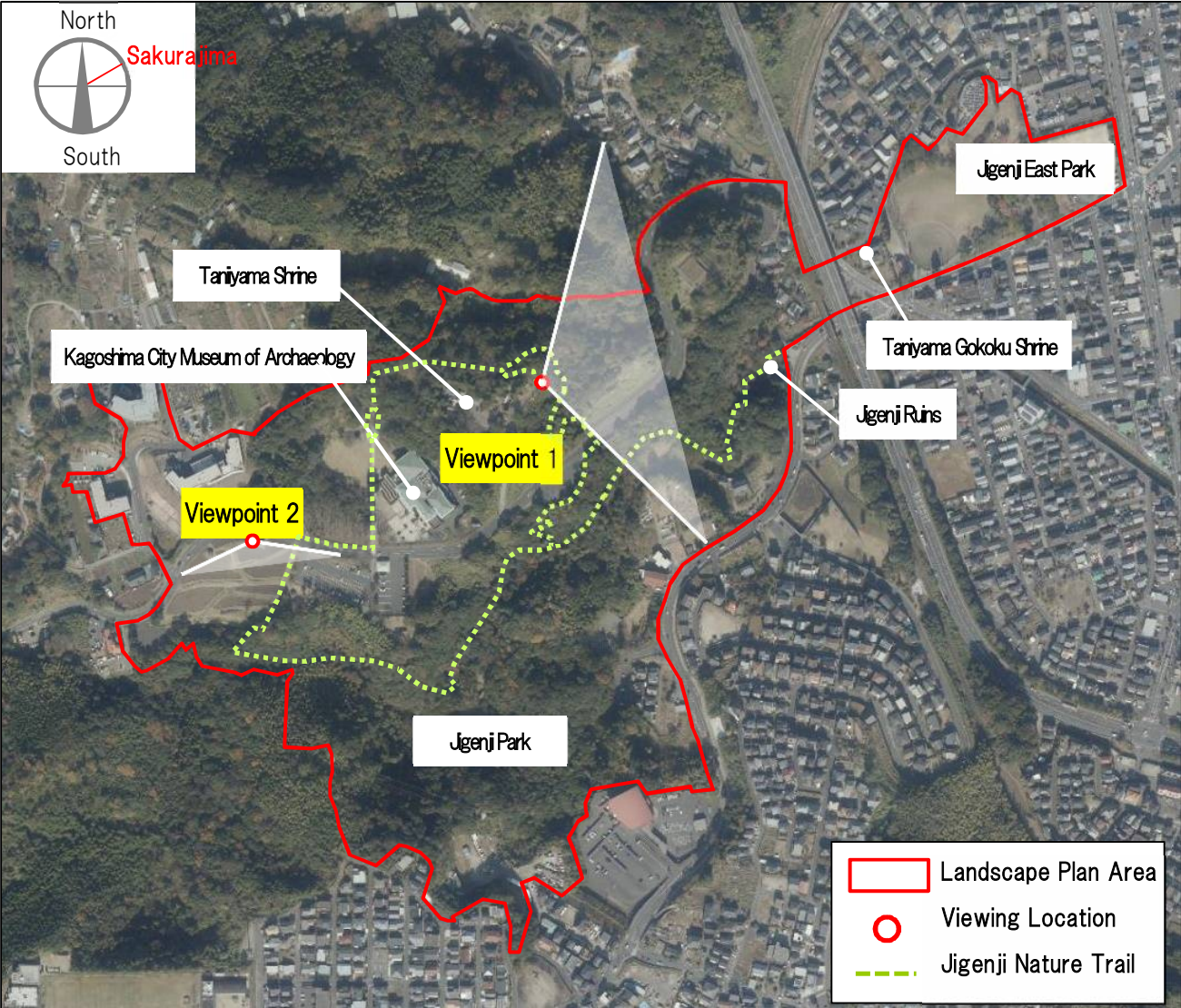


# Establishing Viewpoints and Scenery Trails

From the Jigenji Park area you can see lush greenery all around you, and looking further out you can gaze out onto the city area and Sakurajima. As you stroll through the laurel forest you can enjoy the seasonal colours of autumn leaves or cherry blossoms while listening to flowing river sounds. The region has become a major attraction not only for local residents but also visitors and tourists.

Therefore, we have decided to create "viewpoints" as sites where visitors can enjoy particularly beautiful scenic spots while walking around the Jigenji Park area.

We also recommend the Jigenji Nature Trail, which offers a variety of rich landscapes to enjoy while walking around.







Viewpoint 1 [North latitude 31 degrees 30 minutes 42 seconds 8047, East longitude 130 degrees 30 minutes 04 seconds 6283, Altitude 76.67m].



Viewpoint 2 [North latitude 31 degrees 30 minutes 37 seconds 6961, East longitude 130 degrees 29 minutes 54 seconds 2275, Altitude 59.89m]

### ●Sightseeing Trails and Scenic Spots

The Jigenji Nature Trail is about 3km long, and along the Wada River where fresh water flows, you can see the Inari Shrine, tomb of the buddhist priest Daiu Hakubou, statues of the Nio Guardians and other historical sites. You can also enjoy the seasonal colors of autumn leaves or cherry blossoms, as well as viewing various wild birds and plants.

There are many citizens who go to the Shusui Well on the nature trail to take spring water that flows through the forest.



Inari Shrine



Sakura Square



Statues of the Nio Guardians