

Museum Information

1. Opening hours / Museum holidays

Opening hours

9:30am ~ 6pm (Ticket counter closes at 5:30pm)

Museum holidays

Mondays (When a public holidays falls on Monday, the Museum will be open, and close on the following weekday.)

29th December ~ 1st January

Entry fees

(1) Special exhibitions

Fee differs

(2) Regular exhibitions (museum collections and temporary exhibitions)

	Standard	Group	Museum Passport
General	¥300	¥240	¥600
High school/University	¥200	¥160	¥400
Elementary/Junior High	¥150	¥120	¥300

※Group: 20 people or more

(3) Museum Passport

The Museum Passport costs the amount of two visits to the museum and is valid for a year from the day of purchase. It can be used to see the museum collections and temporary exhibitions for an unlimited amount of times.

The Museum Passport is available for purchase at the museum reception.

We can issue a Museum Passport immediately so please feel free to request for one.

General: ¥600

High school/University students: ¥400

Elementary/Junior high school students: ¥300

(4) Entry fee exemptions

Those who visit on a tour bus

“City tram, city bus or Kagoshima City View bus 1-day pass holders” “CUTE holders”

“Machi-meguri bus 1-day pass holders” “SUNQ Pass holders”

Other

Discount tickets for cultural facilities issued by the Kagoshima Convention & Visitors Bureau (a public interest incorporated foundation)

About this museum

1. The center of Kagoshima's culture and history

The Kagoshima City Museum of Art is located at the remains of the second bailey of Tsurumau Castle; the castle where the Shimazu clan, *daimyo* of the Satsuma Domain, once resided. Located at the foot of Mt. Shiroyama, it is a place that was central to the historical development of politics and culture.

The Kagoshima City Museum of Art opened in 1954 as an art museum that held historic documents. As the only public art museum in the prefecture it accumulated a unique collection and contributed to the promotion of art culture in the region through projects such as exhibitions.

Due to the wishes of the citizens and the diversification of the museum's activities, the former museum was demolished and a new building was erected. The new museum was opened on the 29th of October 1985. The Museum of Art operates with the aim of collecting, preserving, and exhibiting pieces from artists with local connections, as well as Western art from the end of the 19th century to the present.

2. The basic objectives of the Kagoshima City Museum of Art

While focusing on the art of local artists, this museum collects, preserves, and exhibits pieces from both international and domestic artists from the end of the 19th century until the present.

The museum fulfills the function of an art news center as well as a space for artistic activities as experts open the museum for wide access to citizens. It is a place that calms the mind and is open to anyone who wants to visit.

It is a base of forward-looking art culture with a rich, natural atmosphere.

3. The history of the Kagoshima City Museum of Art

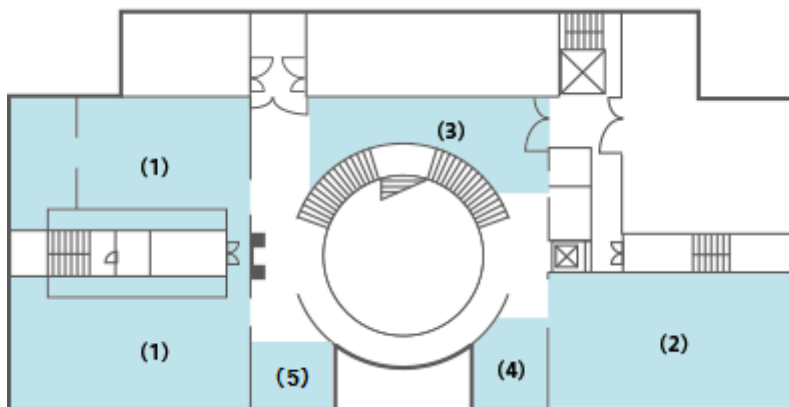
September 1954	The former Museum of Art opened.
June 1957	The former Museum of Art Annex, donated by IWASAKI Yohachiro, was completed.

September 1982	The design for the new museum was consigned (jointly-designed by Takeo Sato Architecture Office and Kawamoto Architectural Design Office).
December 1982	The former museum was demolished.
March 1985	Construction of the new museum completed.
October 1985	The remodeled museum opened.
November 1986	Won the 1986 27th Building Contractor's Society Award.
April 1996	Opening hours extended.
April 1997	Gallery talks begin.
January 2004	The annual opening day moved to January 2nd.
April 2009	Kagoshima City Art Fund Regulations executed.
August 2013	Reached 5 000 000 visitors (since remodeling).

Museum guide

1. Museum Plan

2nd floor



(1) Museum Collection Halls 1, 2 & 3

Exhibits of Modern Era Western art and paintings and sculptures by local artists

(2) Temporary Exhibition Hall

Periodic themed exhibitions with focus on the museum's collection.

(3) Exhibition Gallery

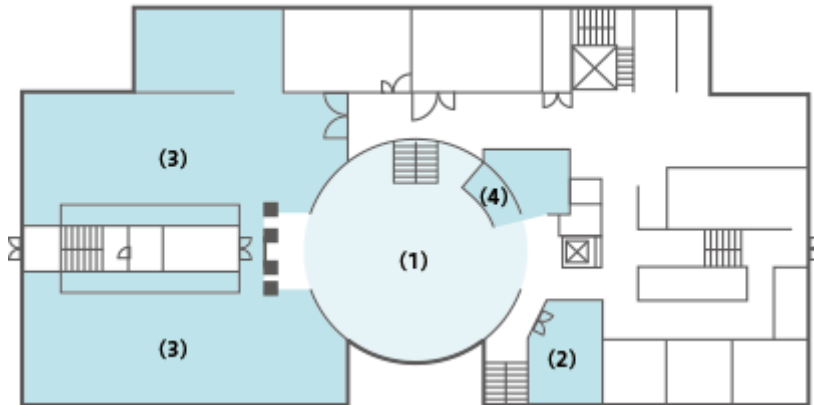
Exhibits of sculptures, Satsuma Ware, Satsuma Kiriko cut glass, and handicrafts.

(4) Lounge

(5) Art Library

You can browse books about art here.

1st floor



(1) Entrance Hall

The atrium ceiling dome was designed with patterns from Satsuma Kiriko cut glass.

(2) Café & Museum Shop

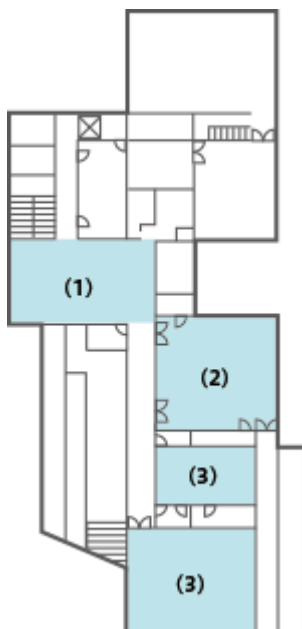
(3) General Exhibition Halls 1 & 2

Special exhibits planned by the art museum and rentable exhibition halls.

(4) General Information

Admission tickets, exhibition picture books, and postcards are sold here.

Basement



(1) Exhibition Lobby

Rentable exhibition hall for group exhibits

(2) Lecture Hall

Art lecture venue and exhibition space

(3) Public Studio 1 & 2

For art lessons held by the museum and a creation space for groups.

2. Museum Equipment

Disabled bathroom (1st floor, basement) ※Ostomate support

Wheelchairs (2)

Strollers (2)

Nursing room

※For more information please inquire at the general information.

Transport / Access

1. Kagoshima City Museum of Art address

Kagoshima-shi Shiroyama-cho 4-36

892-0853

2. When visiting by public transport

Alight from the Kagoshima City View bus at “Saigodozou-mae”. The museum is a 1 minute walk.

Alight from the city tram at “Asahi-dori” or the city bus at “Kinsei-cho”. The museum is a 5 minute walk.

The museum is 10 minutes by car from the Kagoshima Main Line, Kagoshima-Chuo Station.

3. When visiting by car

Car parking: 7 bays

There is a parking lot on the right side of the road when facing the entrance of the museum.

As there is only a limited amount of parking spaces we would ask you to consider taking public transport when possible.

You can also use the Kagoshima City Hall Minato-dori Annex parking lot.

Open: [Week days] 8:30 ~ 19:00, [Sat, Sun, Public Holidays] 9:00 ~ 19:00

If the Kagoshima City Museum of Art parking lot is full you can use the parking lots at the Kagoshima Prefectural Museum of Culture Reimeikan or at the Kagoshima City Modern Literature and “Marchen” Fairy Tale Museums.

(Only available to those who view the exhibitions, participate in lectures, or use the café.)

Open: 9:00 ~ 18:00 (please refrain from parking for a long period of time.)

※You may be unable to use these parking lots during scheduled holidays and exhibitions.

If you have taken National Highway 10 in the direction of Miyazaki (Yoshino/Iso)

(1) Pass Saigodozou and turn left at the traffic light with the sign “Kagoshima City Museum of Art”.

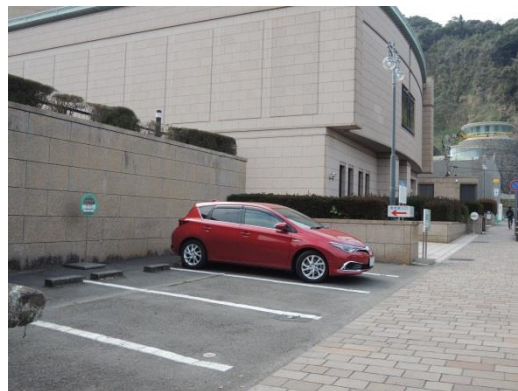
(2) There is a parking lot on the left-hand side.

(3) There is handicapped parking ahead of the general parking.

(4) There is also a parking area for bicycles further ahead.



(1)



(2)



(3)



(4)

Inquiries

Kagoshima City Museum of Art

Kagoshima-shi Shiroyama-cho 4-36

892-0853

Phone: 099-224-3400

Fax: 099-224-3409